

# SANET extreme F

## High performance sanitary cleaner and descaler



### Sustainability Information

#### Sustainable Contribution

- Certified with the European Ecolabel (AT/020/012)
- Complete abandonment of toxic and harmful materials
- Outperforms other products at lower use concentration
- With surfactants of renewable plant-based origin
- SANET extreme F with all its ingredients is totally biodegradable and has proven this important property in an accredited mineralization test according to OECD 302 B standard



#### Quality & Performance

- More than 30 years of experience in the development of high-performance and integrally sustainable cleaning concepts.
- Our Green Care Professional products are produced exclusively in the EMAS-certified plants in Mainz and Hallein in compliance with the highest quality standards



#### Safe for humans & environment

- Our formulas and packaging are safe for humans and nature as well as biological and technical cycles when used properly
- SANET extreme F is formulated from readily biodegradable raw materials



#### Circular cleaning products

- Production with intensive use of renewable raw materials and energy up to 100% from hydropower, solar and geothermal power
- To find out how much plastic, CO<sup>2</sup> and crude oil can be saved with Green Care Professional products, visit: [get.wmprof.com](http://get.wmprof.com)



#### Sustainable profitability

- Our intelligent systems and efficient formulas enable precise and economical dosing as well as complete emptying of the packaging
- Comprehensive and consistently practiced philosophy of sustainable management



#### Comprehensive Service

- As a strategic partner, we offer comprehensive know-how transfer through holistic consulting and support as part of our Green Care Academy
- Customized hygiene plans and cleaning recommendations optimizing your cleaning procedures and thus your business

#### Product certificates



#### Company certificates of Management Systems



**EMAS:** Most demanding system for sustainable environmental



**DIN ISO 14001:** Internationally recognized environmental management system



**DIN ISO 50001:** Internationally recognized energy management system



**DIN ISO 9001:** Internationally recognized quality management system



**EcoVadis:** Provider of business sustainability ratings

# SANET extreme F

## High performance sanitary cleaner and descaler

Supreme lime dissolving | Extremely fast | Natural easy to clean effect



### Product profile

- High performance sanitary cleaner without color and perfume.
- With its innovative formulation SANET extreme F reaches proven top scores in terms of lime dissolving and removes lime desposits and incrustations extremely fast.
- Also typical soillings in the sanitary area such as lime soap, urine scale, cosmetic residues or rust are removed effortlessly.
- A natural easy-to-clean effect is reached by effective and residue-free removal of mineral and organic soillings. Thus water can run off consequently from sanitary objects, fittings and surfaces.
- Makes sanitary surfaces shine without reworking.
- By its material tolerant formulation SANET extreme F contributes to a value-preserving cleaning of all typical fixtures and fittings such as chrome fittings, ceramic tiles, porcellaine objects etc.
- SANET extreme offers all the benefits of an effective, economic and time-saving sanitary cleaner.

### Area of application

- Suitable for all acid resistant surfaces in the entire bath and sanitary area, for example tiles, chromed armatures, porcelain, stainless steel, stoneware, rubber tiles etc.
- Not suitable for acid sensitive natural stones (e.g. marble) and acid sensitive surfaces such as enamel and Polyamid.
- Test material compatibility before use, particularly on plastics. Rinse with fresh water, particularly if used in concentrated application.

### Ingredients, handling, storage and environmental instructions

For the ingredients list, please see the Safety Data Sheet. Product strictly reserve for a professional use. For all information regarding handling, storage conditions and disposal, please see the Safety Data Sheet.

### Sales units:

716988 - 10 x 1 l

pH value



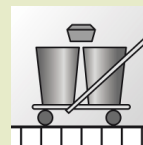
### Application and Dosing



Dose in relation to application and degree of soil. Follow below instructions.

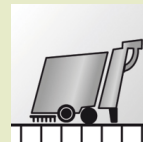


Wipe the surface wet or damp with a clean cloth.



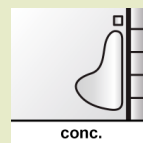
#### Maintenance cleaning

Mop the floor with a clean mop.



#### Manual floor cleaning

Can be applied in auto scrubbers.



#### Open floor surfaces

Use undiluted. Leave the solution for a few minutes. Rinse thoroughly with clear water.



#### Deep cleaning



Joint of tiles to be wettened before using the product undiluted.

Learn more at: [www.green-care-academy.com](http://www.green-care-academy.com)