

ENERGY proKliks

High performance dishwashing detergent for soft and osmosis water



Sustainability Information

Sustainable Contribution

- Certified with Cradle to Cradle Certified® Bronze
- Certified with the European Ecolabel (AT/038/005)
- Developed to fulfill the Austrian Ecolabel
- Registered in the positive list of ,DIE UMWELTBERATUNG'
- Complete abandonment of toxic and harmful materials
- Outperforms other products at lower use concentration
- With surfactants of renewable plant-based origin
- ENERGY proKliks with all its ingredients is totally biodegradable and has proven this important property in an accredited mineralization test according to OECD 302 B standard
- 39% of organic carbon processed in ENERGY proKliks originates from renewable plant resources



Quality & Performance

- More than 30 years of experience in the development of high-performance and integrally sustainable cleaning concepts.
- Our Green Care Professional products are produced exclusively in the EMAS-certified plants in Mainz and Hallein in compliance with the highest quality standards



Safe for humans & environment

- Our formulas and packaging are safe for humans and nature as well as biological and technical cycles when used properly
- ENERGY proKliks is formulated from readily biodegradable raw materials



Circular cleaning products

- Production with intensive use of renewable raw materials and energy up to 100% from hydropower, solar and geothermal power
- To find out how much plastic, CO² and crude oil can be saved with Green Care Professional products, visit: get.wmprof.com



Sustainable profitability

- Our intelligent systems and efficient formulas enable precise and economical dosing as well as complete emptying of the packaging
- Comprehensive and consistently practiced philosophy of sustainable management



Comprehensive Service

- As a strategic partner, we offer comprehensive know-how transfer through holistic consulting and support as part of our Green Care Academy
- Customized hygiene plans and cleaning recommendations optimizing your cleaning procedures and thus your business

Product certificates



Cradle to Cradle Certified® is a registered trademark of the Cradle to Cradle Products Innovation Institute.

Company certificates of Management Systems



EMAS: Most demanding system for sustainable environmental



DIN ISO 14001: Internationally recognized environmental management system



DIN ISO 50001: Internationally recognized energy management system



DIN ISO 9001: Internationally recognized quality management system



EcoVadis: Provider of business sustainability ratings

ENERGY proKliks

High performance dishwashing detergent for soft and osmosis water

Powerful cleaning | Soft and osmosis water | Excellent stain removal



Product profile

- The unique hybrid polymer backbone of ENERGY proKLIKS is of natural origin and not synthetic which gives it its exclusive colour while providing outstanding residue-free cleaning results.
- Thanks to its innovative system of fully biodegradable amino acid based sequestering agents as alternative to phosphate, NTA and EDTA it prevents lime scale deposits while ensuring a boosting effect leading to an unmatched grease and stain removal in soft and osmosis water.
- Its ultra-concentrated formula enhances lowest dosing and economic consumption.
- Majorly composed of renewable resources, ENERGY proKliks takes on the responsibility for future generations.
- KLIKS is a closed system with a clever packaging design providing maximum user safety and hygiene while guaranteeing the complete emptying of the product and a space saving disposal.

Area of application

- ENERGY proKliks is suitable for all types of dishwashing machines, e.g. big ribbon and single-tank machines.
- It is applicable for all alkali-resistant dishes and cutlery, it thoroughly washes plates, glasses, pans and pots. Do not use for dishes and cutlery made of aluminum and silver!
- Use in combination with green care BRILLANT Kliks products.

Ingredients, handling, storage and environmental instructions

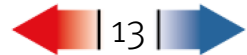
For the ingredients list, please see the Safety Data Sheet. Product strictly reserve for a professional use. For all information regarding handling, storage conditions and disposal, please see the Safety Data Sheet.

Sales units:

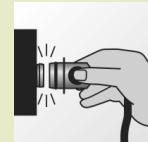
1114264 - 1 x 5 l

716102 - 1 x 10 l

pH value



Application and Dosing



Closed system for maximum user safety and intuitive handling.

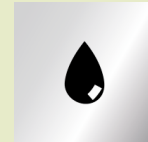


0,6-2,5 g/l

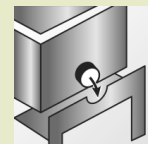
Automatic dosing systems highly recommended.



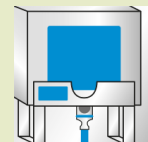
for light to heavy soiling.



soft water



Open box as indicated through icons on the box and insert spout correctly in holder.



Pay attention to colour coding for safe application.



Recycle cardboard box with paper and plastic bag with plastic.

Learn more at: www.green-care-academy.com